

Observation

We look, listen and note what we see and hear from the children in their learning.

Observation allows us to understand how they develop, learn and progress.

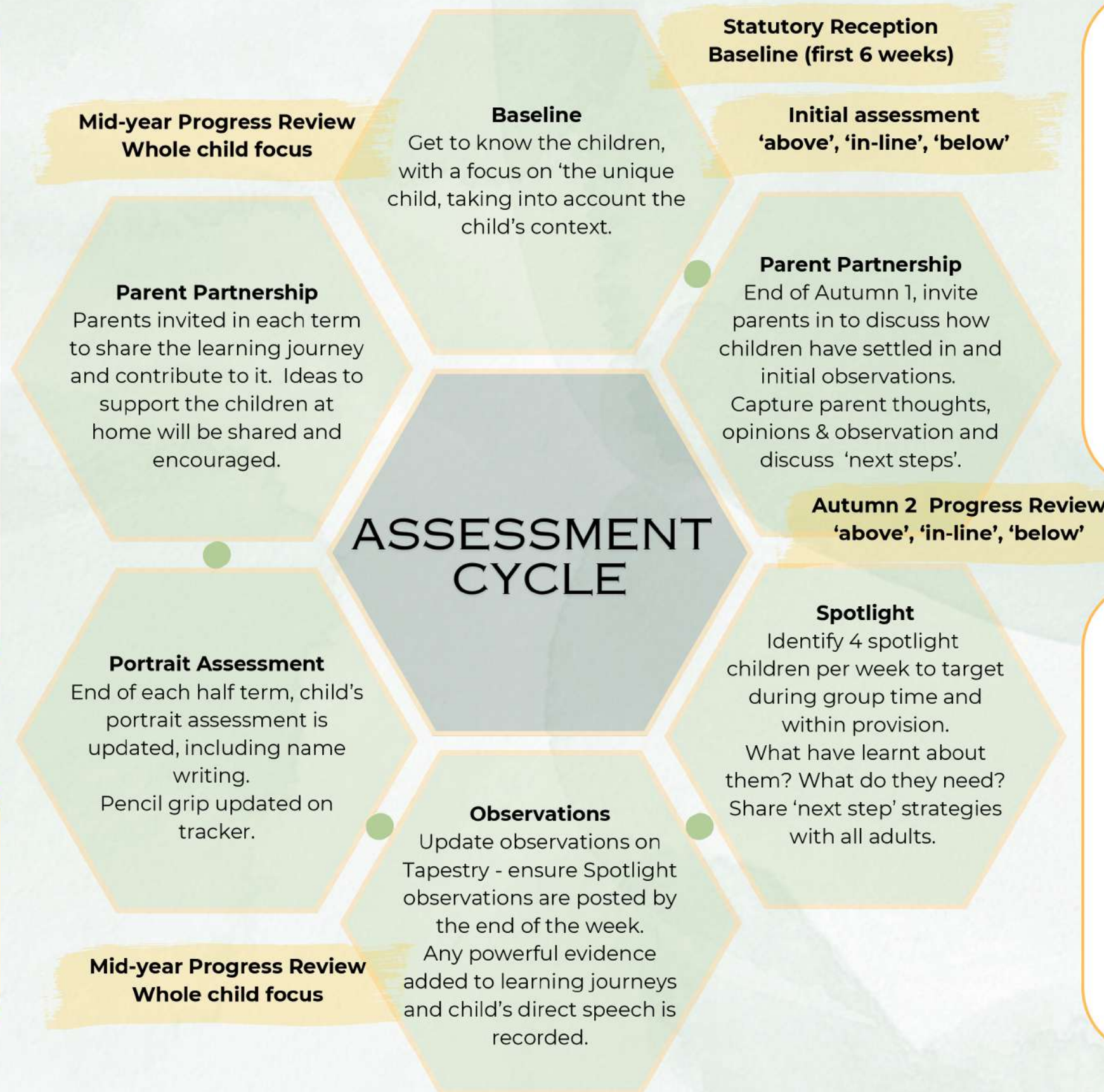
Observation includes:

- *Looking
- *Listening
- *Thinking
- *Questioning
- *Recording

We observe children's interactions and interests, what they choose to do, which resources they enjoy interacting with and what they say and ask. This provides reliable information about each child as an individual and allows us to both assess their learning and plan next steps to move their learning forward.

Family partnership

Parent's, carers and families know their children best and building a close relationship with them is a priority. Parents play a key role in our ongoing assessment of children by sharing their own views and observations of their child's development.



Assessment

This is the process of analysing and reviewing what we know about the children's learning and development. This process is invisible to the children and does not involve any form of 'testing'.

Questions to ask:

- *What do the observations tell us about the child's learning & developing?
- *Are we evidencing and capturing progress over time?
- *How is the assessment feeding into planning?

Planning

Planning in reception is designed to meet young children's needs so that they can play and learn happily in ways which will help them develop knowledge across the Prime and Specific areas of learning in the EYFS.

We follow a long term plan, with an overarching intent which spans the reception year. However, our short term planning allows us the flexibility to respond to the needs and interests of the children.